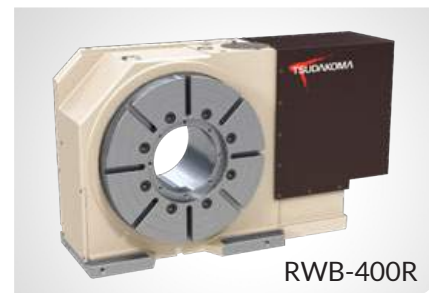


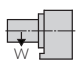

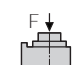
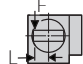
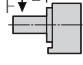
RWB-250, 320, 400, 500R

HEAVY DUTY • DUAL DISC HYDRAULIC CLAMPING

The RWB-Series rotary tables are equipped with the finest Tsudakoma technologies. RWB tables utilize a powerful dual disc hydraulic clamping mechanism, and are available with a built-in air/hydraulic booster. RWB-Series worm wheels are manufactured as an assembly consisting of the worm wheel, cross roller bearing, and the main spindle, resulting in unsurpassed accuracy.



RWB-400R

Table Model		RWB-250	RWB-250,S	RWB-320	RWB-320,S	RWB-400	RWB-500
Versions available		R, L	R, L	R, L	R, L	R, L	R, L
Table diameter	mm	250	250	320	320	400	500
Center height	mm	160	160	210	210	255	310
Center bore	Nose Diameter	mm	105	150	150	200	220
	Thru Diameter	mm	80	120	120	160	182
Table T-slot width		12H7	12H7	14H7	14H7	14H7	18H7
Guide block width		18h7					
Servo motor (Fanuc)*		Alpha 8i	Alpha 8is	Alpha 12i	Alpha 12is	Alpha 12i	Alpha 12i
Maximum motor speed	rpm	4,000	4,000	4,000	4,000	4,000	4,000
Speed reduction ratio		1/90	1/45	1/90	1/45	1/90	1/180
Maximum table speed	rpm	44.4	88.9	44.4	88.9	44.4	22.2
Inertia converted into motor shaft	x 10 ⁻³ kg·m ²	1.27	1.27	3.53	3.53	4.63	3.00
Clamp system**		Hydraulic					
Clamp torque @500psi	Nm (ft. lbs.)	1,300 (958)	1,300 (958)	3,100 (2,284)	3,100 (2,284)	5,500 (3,053)	6,100 (4,496)
Clamp torque @700psi	Nm (ft. lbs.)	2,000 (1,474)	2,000 (1,474)	4,700 (3,463)	4,700 (3,463)	8,000 (5,896)	11,000 (8,107)
Indexing accuracy		±7 arc sec.					
Net Weight	kg (lbs.)	125 (286)	125 (286)	250 (550)	250 (550)	360 (792)	620 (1,364)
Allowable wheel torque	Nm (ft. lbs.)	1,011 (745)	1,011 (745)	2,127 (1,567)	2,127 (1,567)	3,958 (2,917)	3,276 (2,414)
Allowable work inertia	kg·m ²	7.0	7.0	19.2	19.2	36	112
Allowable work weight [w/ tailstock]	 kg (lbs)	175 (385) [350 (770)]	175 (385) [350 (770)]	250 (550) [500 (1,100)]	250 (550) [500 (1,100)]	300 (660) [600 (1,320)]	600 (1,320) [1,200 (2,460)]
	 with SSB	900 (1,980)	900 (1,980)	1,500 (3,300)	1,500 (3,300)	1,800 (3,960)	3,600 (7,920)
Allowable load when table clamped	 N (lbf)	35,000 (7,700)	35,000 (7,700)	89,000 (19,580)	89,000 (19,580)	109,000 (23,980)	240,000 (52,800)
	 Nm (ft. lbs.)	1,300 (958)	1,300 (958)	3,100 (2,284)	3,100 (2,284)	5,500 (4,053)	7,600 (5,601)
	 Nm (ft. lbs.)	1,500 (1,105)	1,500 (1,105)	5,300 (3,906)	5,300 (3,906)	7,800 (5,748)	17,000 (12,529)

* Other motors & RPM available

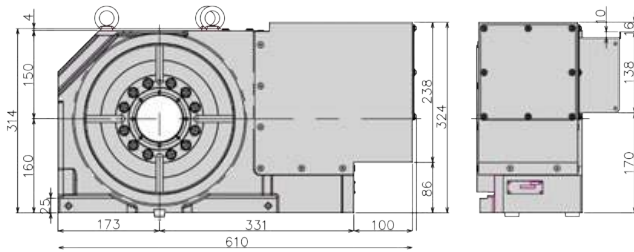
** Booster optional

Specifications subject to change without notice

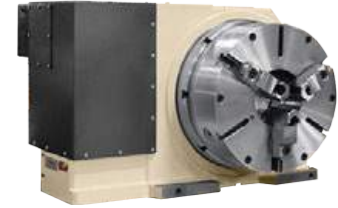
Dimensions

Drawings not to scale • Dimensions = mm

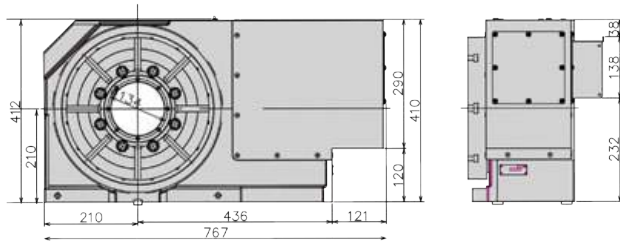
RWB-250R



RWB-400L with Booster & TC-385F Chuck



RWB-320R

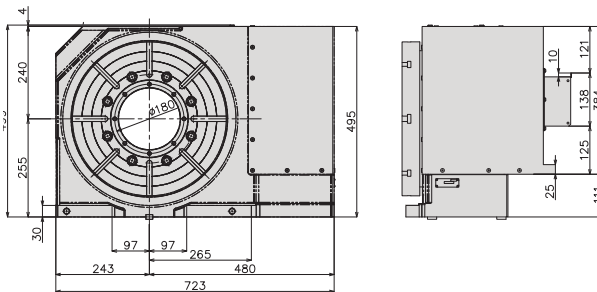


RWB-320R • TSH-210 Support Spindle

The rotary table and hydraulic support spindle are mounted on a custom baseplate and joined to a specially designed trunnion fixture.



RWB-400R

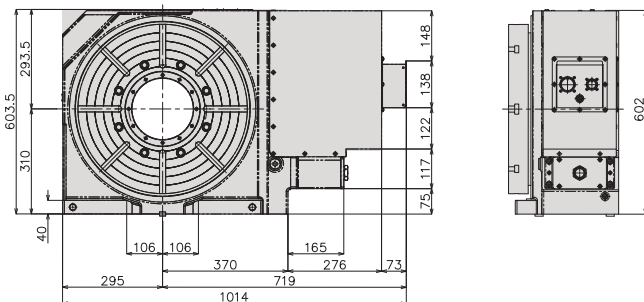


RWB-400R • TSH-210 Support Spindle

The rotary table and hydraulic support spindle are mounted on a custom baseplate and joined to a specially designed trunnion fixture. The support spindle is raised to match the RWB-400 255mm center height.



RWB-500R



The dimensions above are for tables with a FANUC servo motor. Other motors available (dimensions may increase).

Options & Accessories

TPC NC Controller	
Chucks	
Tailstock	
Support Spindle	
Face Plate	
Encoder / Scale	
Pull Stud Device	
Rotary Joint	
PVC Cables	

Clamping Block and Bolt

Dimensions = mm

	Type	Q'ty	T-Slot Width	A	B	C	D	E	F	G	H	I	J	K	L	M
RWB-250	I	4	18	25	12	80	12	33	35	22	21	11	65	40	28	16
RWB-320	I	4	18	30	15	90	16	31	43	25	21	11	70	46	28	16
RWB-400	I	4	18	30	15	90	16	31	43	25	21	11	70	46	28	16
RWB-500	I	4	18	40	20	110	18	42	50	25	21	11	70	46	28	16

Note: When using a machine with a T-slot pitch other than the above, use suitable clamping blocks and bolts that are available on the market, or order custom-made ones (opt.)

Type I

