

**RN-100/150-2,3,4 | RN-200/250/300-2,3**

MULTI-FACE PLATE, MULTI-SPINDLE TABLE • PNEUMATIC CLAMPING

These high speed, multi-spindle rotary tables are particularly suited for multi-spindle vertical machining centers. The compact, multi-spindle RN-100 is ideal for use on drilling and tapping machines.



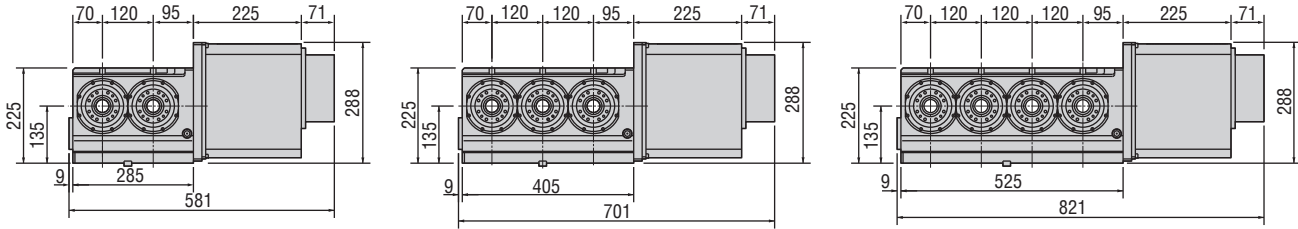
Table Model		RN-100-2,3,4	RN-150-2,3,4			RN-200-2,3		RN-250-2,3		RN-300-2,3					
Versions available		R, L	R			R		R		R					
Spindle outer diameter	mm	80h7	100h7			120h7		-		-					
Table diameter (optional)	mm	(115)	(160)			(200)		250		320					
Center height	mm	135	135			160		160		210					
Center bore	Nose Diameter	mm	50H7			55H7		65H7		75H7		110H7			
	Thru Diameter	mm	30			40		45		45		85			
Table T-slot width (with face plate)			(10H8)			(12H8)		(12H8)		12H8		14H8			
Minimum spindle center distance			120			215		250		300		380			
Guide block width			18h7			14h7		18h7		18h7		18h7			
Servo motor (Fanuc)*			Alpha 4i			α4i	Alpha 8i		Alpha 8i		Alpha 8i		Alpha 12i		
Maximum motor speed	rpm	5,000			5,000	4,000		4,000		4,000		4,000			
Speed reduction ratio			1/36			1/90	1/180		1/90		1/120	1/180		1/120	
Number of spindles		2	3	4	2	3	4	2	3	2	3	2	3		
Maximum table speed	rpm	138.9			55.5	44.4	22.2	44.4		33.3	22.2		33.3		
Inertia converted into motor shaft $\times 10^{-3} \text{kg}\cdot\text{m}^2$		.64	.92	1.06	.42	.78	.39	.55	.92	.84	.63	2.09	2.63		
Clamp system		Pneumatic													
Clamp torque @72psi	Nm (ft. lbs.)	80 (59)			156 (115)			294 (217)		441 (325)		880 (649)			
Indexing accuracy		±30			±15										
Net Weight [dual spindle]	kg (lbs.)	70-110 (154-242)			[120 (264)]			[160 (352)]		[240 (528)]		[480 (1,056)]			
Allowable wheel torque	Nm (ft. lbs.)	178 (131)			147 (108)			245 (181)		470 (346)		764 (563)			
Allowable work inertia		.10			.48			1.2		2.0		3.7			
Allowable work weight	kg (lbs) [w/ tailstock]	25 (55) [50 (110)]			75 (165) [150 (330)]			100 (220) [250 (550)]		100 (220) [250 (550)]		150 (330) [350 (770)]			
	kg (lbs)	50 (110)			150 (330)			250 (550)		250 (550)		350 (770)			
Allowable load when table clamped	N (lbf)	5,880 (1,317)			7,840 (1,756)			13,720 (3,073)		13,720 (3,073)		19,600 (4,390)			
	Nm (ft. lbs.)	80 (59)			156 (115)			294 (217)		441 (325)		880 (649)			
	Nm (ft. lbs.)	156 (115)			392 (289)			980 (722)		980 (722)		1,960 (1,444)			

\* Other motors & RPM available  
Specifications subject to change without notice

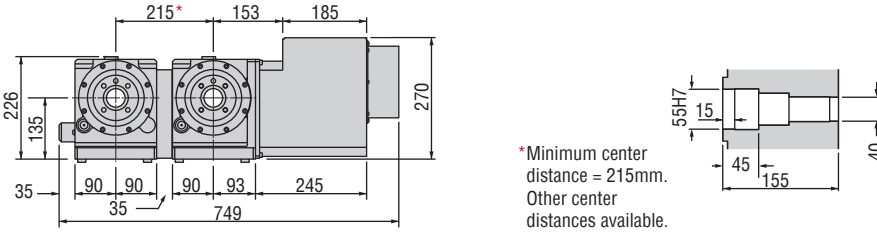
**Dimensions**

Drawings not to scale • Dimensions = mm

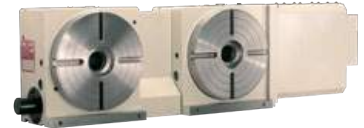
**RN-100R-2,3,4**



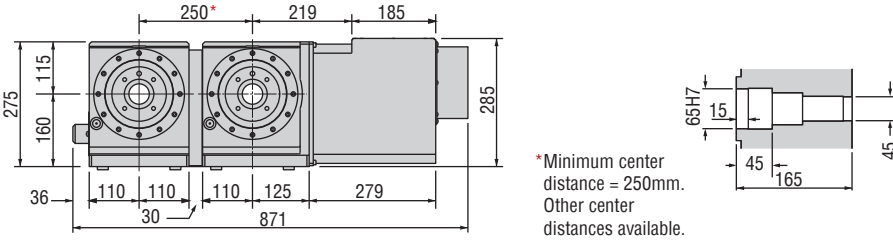
**RN-150R-2 (3 & 4 spindle models also available)**



RN-250-2



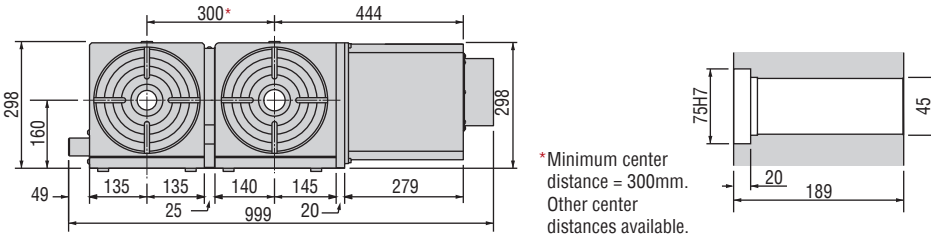
**RN-200R-2 (3 spindle model also available)**



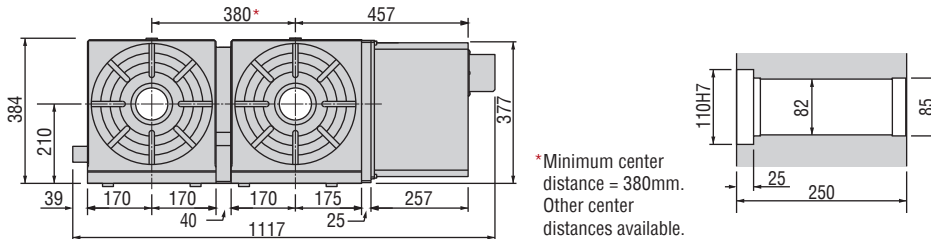
RN-100R-4 w/5C Collets



**RN-250R-2 (3 spindle model also available)**



**RN-300R-2 (3 spindle model also available)**



**Options & Accessories**

TPC NC Controller	
Chucks	
Tailstock	
Support Spindle	
Face Plate	
Encoder / Scale	
Pull Stud Device	
Rotary Joint	
PVC Cables	

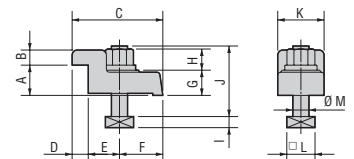
The dimensions above are for tables with a FANUC servo motor. Other motors available (dimensions may increase).

**Clamping Block and Bolt**

Dimensions = mm

	Type	Q'ty	T-Slot Width	A	B	C	D	E	F	G	H	I	J	K	L	M
RN-100R	I	2	18	25	12	80	12	33	35	22	21	11	65	40	28	16
RN-150R	I	2	18	25	12	80	12	33	35	22	21	11	65	40	28	16
RN-200R	I	2	18	25	12	80	12	33	35	22	21	11	65	40	28	16
RN-250R	I	4	18	25	12	80	12	33	35	22	21	11	65	40	28	16
RN-300R	I	4	18	30	15	90	16	31	43	25	21	11	70	46	28	16

Type I



Note: When using a machine with a T-slot pitch other than the above, use suitable clamping blocks and bolts that are available on the market, or order custom-made ones (opt).