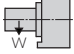

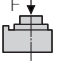
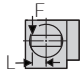
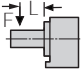


RBS-160, 250, 320

ZERO MAINTENANCE • HIGH TORQUE TRANSFER EFFICIENCY

introduces a new line of high accuracy, high rigidity, energy saving and zero maintenance rotary tables from Tsudakoma. The RBS Series rotary tables are built using the new ball drive system featuring advantages like zero backlash, improved cycle times, energy conservation and a lifetime adjustment-free transmission system.



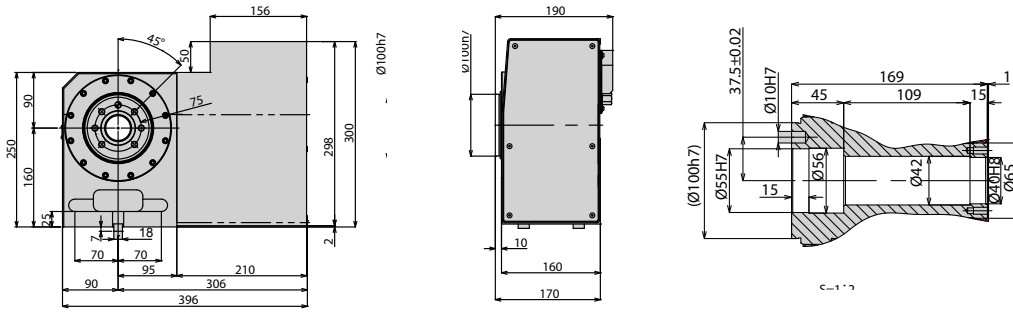
Table Model		RBS-160	RBS-250	RBS-320
Versions available		R, L	R, L	R, L
Table diameter		mm (160, 200)	250	320
Center height		mm 160	210	255
Center bore	Nose Diameter	mm 55H7	80H7	115H7
	Thru Diameter	mm 40	50	85
Table T-slot width		12H8	12H8	14H8
Guide block width		14h7	18h7	
Servo motor (Fanuc)*		Alpha 4i	Alpha 8i	Alpha 12i
Maximum motor speed		rpm 5,000	4,000	4,000
Speed reduction ratio		1/36	1/36	1/36
Maximum table speed		rpm 138.9	111.1	111.1
Inertia converted into motor shaft		$\times 10^{-3} \text{kg}\cdot\text{m}^2$ .19	.42	2.24
Clamp system**		Pneumatic		
Clamp torque @72psi		Nm (ft. lbs.) 700 (516)	1,480 (1,076)	2,580 (1,901)
Indexing accuracy		arc sec. $\pm 7.5$		
Net Weight		kg (lbs.) 55 (121.2)	100 (220)	200 (440)
Allowable work inertia		kg $\cdot\text{m}^2$ 0.64	1.95	4.48
Allowable work weight [w/ tailstock]	 kg (lbs)	100 (220) [200 (441)]	125 (275) [250 (551)]	175 (385) [350 (771)]
	 kg (lbs)	200 (441)	250 (551)	350 (771)
Allowable load when table clamped	 N (lbf)	10,800 (7,965)	14,400 (10,620)	24,800 (18,291)
	 Nm (ft. lbs.)	500 (368)	1,000 (737)	1,500 (1,106)
	 Nm (ft. lbs.)	780 (575)	1,900 (1,401)	4,700 (3,466)

\*Other motors & rpm available • Dimensions = mm  
Specifications subject to change without notice

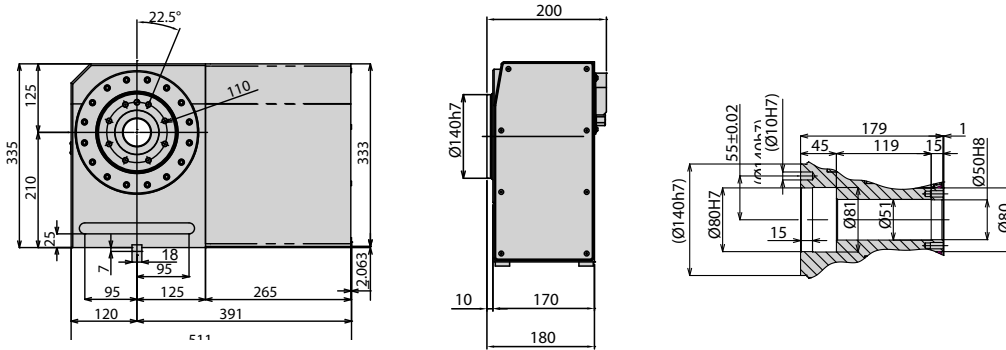
**Dimensions**

Drawings not to scale • Dimensions = mm

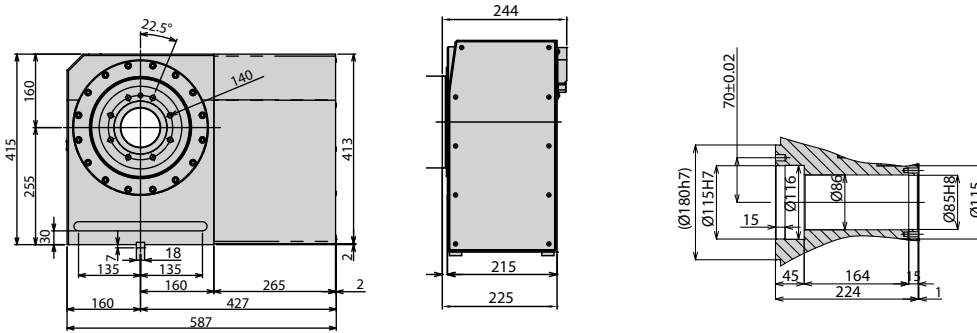
**RBS-160**



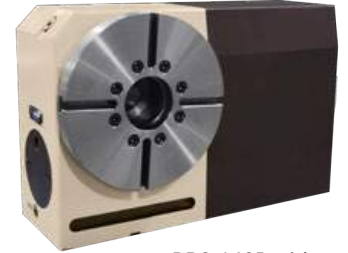
**RBS-250**



**RBS-320**



The dimensions above are for tables with a FANUC servo motor. Other motors available (dimensions may increase).



RBS-160R with optional faceplate



RBS-160R with 6" 3-Jaw Scroll Chuck

**Clamping Block and Bolt**

Dimensions = mm

	Type	Q'ty	T-Slot Width	A	B	C	D	E	F	G	H	I	J	K	L	M
RBS-160	-	2	14	-	-	-	-	-	-	-	17	8	60	-	23	12
RBS-250	I	4	18	25	12	80	12	33	35	22	21	11	65	40	28	16
RBS-320	I	4	18	30	15	90	16	31	43	25	21	11	70	46	28	16

**Options & Accessories**

TPC NC Controller	
Chucks	
Tailstock	
Support Spindle	
Face Plate	
Encoder / Scale	
Pull Stud Device	
Rotary Joint	
PVC Cables	