

# DM-170

## Direct Drive Motor NC Rotary Table



### DM-SERIES

- Max. table speed 200min<sup>-1</sup>
- High Precision indexing system (With DD Motor)
- Vertical & Horizontal available
- Compact Design
- Extremely Rigid Body
- Yaskawa Direct Drive Motor

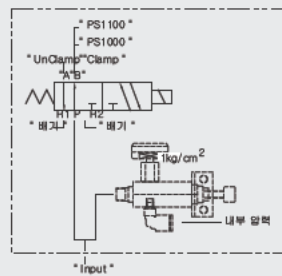
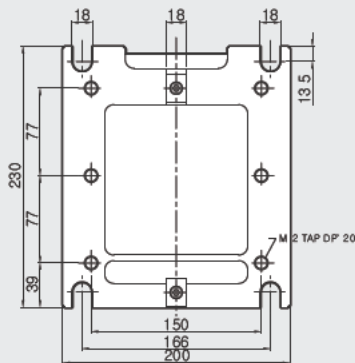
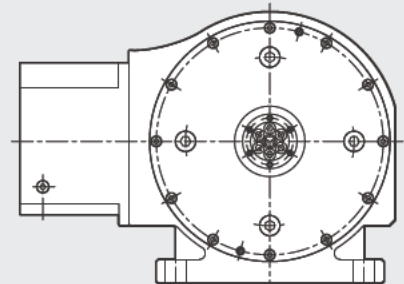
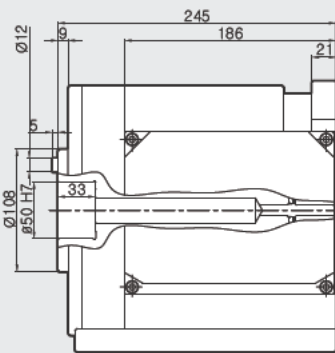
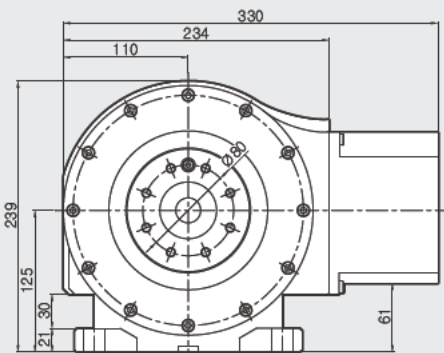
Mode No. **DM-170**

Table Diameter

TYPE: Direct Drive Motor Type NC Rotary Table

Max. Table Dia. [mm]	Center Height [mm]	Resister Dia. On face plate [mm]	Spindle Thruhole Dia. [mm]	Clamp Method	Clamp Torque [N·m]
Ø170	125	Ø50H7	-	Pneumatic	-
Max. Spindle Speed [mm <sup>-1</sup> ]	Gear Ratio	Repeatability Accuracy [sec]	Indexing Accuracy [sec]	Allowable Work Inertia [10 <sup>-4</sup> kgm <sup>2</sup> ]	Net Weight [kg]
200	1/1	±1.3	15	-	64
Allowable Load					Allowable Cutting Torque
Horizontal	Vertical	F [N]	F x L [N·m]	F x L [N·m]	[N·m]
-	-	3300	-	-	-

### DM-170



# DM-260

## Direct Drive Motor NC Rotary Table

- Max. table speed 200min<sup>-1</sup>
- High Precision indexing system (With DD Motor)
- Vertical & Horizontal available
- Compact Design
- Extremely Rigid Body
- Yaskawa Direct Drive Motor



### DM-SERIES

Mode No. **DM-260**

Table Diameter

TYPE : Direct Drive Motor Type NC Rotary Table

Max. Table Dia. [mm]	Center Height [mm]	Resister Dia. On face plate [mm]	Spindle Thruhole Dia. [mm]	Clamp Method	Clamp Torque [N·m]
Ø258	150	Ø60H7	Ø35H8	Pneumatic	400
Max. Spindle Speed [mm <sup>-1</sup> ]	Gear Ratio	Repeatability Accuracy [sec]	Indexing Accuracy [sec]	Allowable Work Inertia [10 <sup>-4</sup> ·kgm <sup>2</sup> ]	Net Weight [kg]
200	1/1	±1.3	10	-	84
Allowable Load					Allowable Cutting Torque [N·m]
Horizontal	Vertical	F [N]	F x L [N·m]	F x L [N·m]	
70	35	4000	-	400	51

### DM-260

