

## Rusach International 5-Series: Vertical NC Rotary Tables - Range A 200mm thru 800mm



Made in the USA

### The Rusach Advantages

#### Application

For applications that require table sizes between 200mm and 800mm diameter in the vertical position. Suitable for heavy machining and metrology applications, with high accuracies and heavy load capabilities.

#### Bearing

Preloaded axial-radial roller bearings incorporated providing high rigidity in both planes. Sensitivity and fine positioning ensured.

#### Clamping

Distortion free passive clamping by preloaded spring elements and hydraulic release.

#### Measuring Systems

Standard mechanical accuracy of +/- 15.0 Arc Seconds. High precision Heidenhain encoders are offered for increased accuracies to +/-1.0 arc seconds.

#### Motors

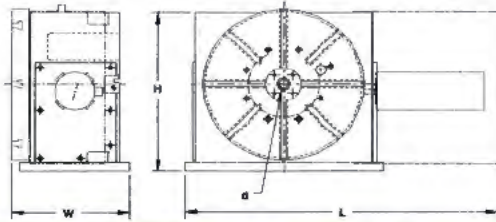
DC and AC servomotors.

#### Construction

Modular design permits freedom to match application requirements. Worm gear drive specially configured for maximum torque and minimum (adjustable) backlash.



## 5-Series: Vertical NC Rotary Tables - Range A



Technical Data		Unit	5-02	5-03	5-04	5-06
Type Designation			D200	D320	D450	D630
			D250	D450	D630	D800
			D320			
Table Diameter	Round	mm	200	320	450	630
		Inches	7.87	12.60	17.72	24.80
		mm	250	450	630	800
		Inches	9.84	17.72	24.80	31.50
		mm	320			
		Inches	12.60			
T-slots (DIN 650)	Size number	mm	12	14	14	18
			4	6	8	8
Dimension	L	mm	530	640	850	1000
		Inches	20.87	25.20	33.46	39.37
	W	mm	180	200	305	325
		Inches	7.09	7.87	12.08	12.79
	H	mm	305	345	500	750
		Inches	12.01	13.58	19.68	29.53
mm		305	425	590	800	
Inches		12.01	16.73	23.23	31.50	
		mm	340			
		Inches	13.39			
Center Hole	d	mm	25	40	40	50
		Inches	0.98	1.57	1.57	1.97
Weight (Approx.) w/o motor	kg		90	120	200	400
		lb	198	264	440	880
	kg		110	190	310	530
		lb	242	418	682	1166
		kg	120			
		lb	264			
Uniform Loading	kg		180	400	1,000	1,600
		lb	396	880	2,200	3,520
Permitted Machining Force	N		10,000	20,000	25,000	30,000
		lb	2,200	4,400	5,500	6,600
Clamping Force	Nm		800	2,000	4,000	6,000
		lb in	6,929	17,322	34,650	51,970
Milling Torque	Nm		700	700	4000	5500
		lb in	6,063	6,063	32,650	47,640
Main Gear Ratio			120:1	180:1	180:1	180:1
Face Plate Runout	mm		0,005	0,010	0,010	0,010
		inches	0,0002	0,0004	0,0004	0,0004
Runout of Center Bore	mm		0,010	0,010	0,010	0,010
		inches	0,0004	0,0004	0,0004	0,0004
Squareness of Table to base	mm/300mm		0.010	0.010	0.010	0.010
		inches/12 inches	0.0004	0.0004	0.0004	0.0004

For other specifications please contact our Technical department.  
The rights for technical modifications are reserved.

Reference dimensions only. Approval prints are supplied on all tables.

## Available Options

- Hand Scraped Table Top Surface
- Customized Table Top
- Workpiece Clamping System
- Alternative Measuring Systems made by Heidenhain. i.e. (ROD 800)
- A Horizontal and Vertical Version can be Supplied. (Convertible)
- Air Inlet for Internal Pressurization
- Various Motors and Intermediate Gear Boxes
- Prepared for Linear Axis (Saddle)
- Hydraulic Unit for the Clamping System
- Other Paint Surface Finishes
- NC Systems to Suit Your Application
- Tail Stock Assemblies
- Part supports

## Standard Resolution

.0001 degree (others on request)

## Standard Accuracy

+/- 15 arc seconds. Higher accuracy on request.

## Painted Surface Finish

RAL-color range in textured surface finish

## Clamp Release Pressure

90 bar or 300 psi

Call Rusach International

100 Raymond Street

Hope, IN 47246

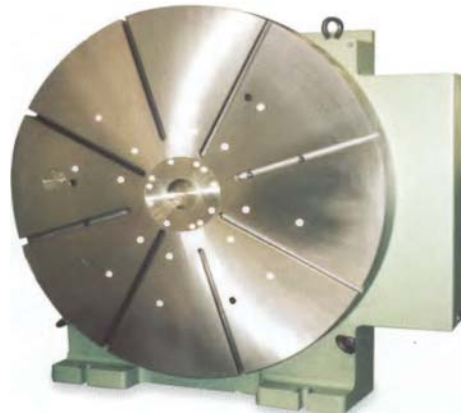
Phone: 317-638-0298

[www.rusach.com](http://www.rusach.com)





## Rusach International 5-Series: Vertical NC Rotary Tables - Range B 800mm thru 2,000mm



Made in the USA

### The Rusach Advantages

#### Application

For situations that require table sizes between 800mm and 2,000mm diameter in the vertical position. Suitable for heavy machining and metrology applications, with high accuracies and heavy load capabilities. Larger diameters designed upon request.

#### Bearing

Preloaded axial-radial roller bearings incorporated providing high rigidity in both planes. Sensitivity and fine positioning ensured.

#### Clamping

Distortion free passive clamping by preloaded spring elements and hydraulic release.

#### Measuring Systems

Standard mechanical accuracy of +/- 15.0 Arc Seconds. High precision Heidenhain encoders are offered for increased accuracies to +/-1.0 arc seconds.

#### Motors

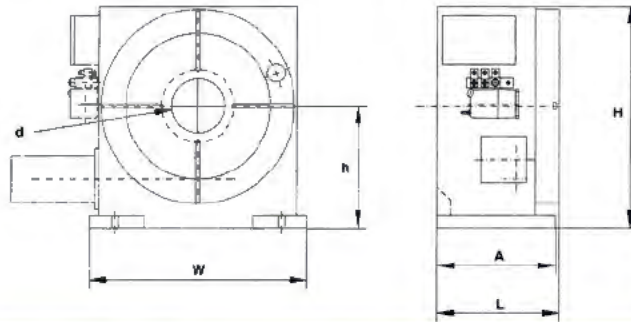
DC and AC servomotors.

#### Construction

Modular design permits freedom to match application requirements. Worm gear drive specially configured for maximum torque and minimum (adjustable) backlash.



## 5-Series: Vertical NC Rotary Tables—Range B



**Reference dimensions only. Approval prints are supplied on all tables.**

Technical Data		Unit	5-08	5-10	5-12	5-16
Type Designation			D800	D1000	D1250	D1600
			D1000	D1250	D1600	D2000
Table Diameter	Round	mm	800	1000	1250	1600
		Inches	31.50	39.37	49.21	62.99
		mm	1000	1250	1600	2000
		Inches	39.37	49.21	62.99	78.74
T-slots (Din 650)	Size number	mm	18	18	22	22
			8	8	8	8
Dimension	L	mm	500	610	810	1000
		Inches	19.86	24.02	31.89	39.37
	W	mm	820	1010	1250	1600
		Inches	32.28	39.76	49.21	62.99
	H	mm	860	1055	1300	1650
		Inches	33.86	41.54	51.18	64.96
		mm	1050	1300	1650	2050
		Inches	43.31	52.16	66.93	82.68
A	mm	490	600	800	990	
	Inches	19.29	23.62	31.50	38.98	
Centre Hole	d	mm	100	100	100	100
		Inches	3.94	3.94	3.94	3.94
Centerline of Table	h	mm	450	550	675	850
		Inches	17.72	21.65	26.57	33.46
		mm	550	675	850	1050
		Inches	21.65	26.57	33.46	41.34
Weight (Approx) w/o motor		kg	1,000	1,550	3,500	7,000
		lb	2,200	3,410	7,700	15,400
		kg	1,600	2,800	4,500	8,500
		lb	3,520	6,160	9,900	18,700
Loading Capacity (uniform)		kg	2,500	6,000	9,000	15,000
		lb	5,500	13,200	19,800	33,000
Permitted Machining Force		N	63,000	80,000	100,000	150,000
		lb	13,860	17,600	22,000	33,000
Clamping Torque (standard)		Nm	17,000	22,000	30,000	65,000
		lb in	147,244	190,550	259,840	562,992
Max. Milling Torque		Nm	11,000	19,000	27,000	60,000
		lb in	95,275	164,567	233,858	519,685
Main Gear Ratio (standard)			360:1	360:1	360:1	360:1
Face Plate Runout (0.9 x D Max)		mm	0,015	0,015	0,020	0,020
		inches	0,0006	0,0006	0,0008	0,0008
Runout of Centre Bore		mm	0,010	0,010	0,010	0,010
		inches	0,0004	0,0004	0,0004	0,0004
Squareness of Table to Base		mm/300mm	0.01	0.01	0.01	0.01
		in/12 inches	0.0004	0.0004	0.0004	0.0004

## Available Options

- Hand Scraped Table Top Surface
- Customized Table Top
- Workpiece Clamping System
- A Horizontal and Vertical Version can be Supplied. (Convertible)
- Air Inlet for Internal Pressurization
- Various Motors and Intermediate Gear Boxes
- Prepared for Linear Axis (Saddle)
- Hydraulic Unit for the Clamping System
- Other Paint Surface Finishes
- NC Systems to Suit Your Application
- Tail Stock Assemblies
- Part Supports
- Larger Diameters Engineered on Request

## Standard Resolution

.0001 degree (others on request)

## Standard Accuracy

+/- 15 arc seconds. Higher accuracy on request.

## Clamp Release Pressure

90 bar or 300 psi

## Painted Surface Finish

RAL-color range in textured surface finish

For other specifications please contact our Technical department.

The rights for technical modifications are reserved.

## Call Rusach International

100 Raymond Street

Hope, IN 47246

Phone: 317-638-0298

www.rusach.com

