

# NST | MANUAL TILTING ROTARY TABLE

- Table can be tilted at 0°~90° manually
- Indexing is CNC controlled so that it can be adapted to all kinds of machining
- Suitable for wide variety of applications thanks to numerical tilting axis control



— MOTOR MOUNTED —      — FACE PLATE —      — M-SIGNAL METHOD —

R RIGHT HAND    L LEFT HAND    WITH FACE PLATE    W/O FACE PLATE    α21 CTRL    EZ CTRL    ADD. AXIS    ACCURACY SPEC.

ROTARY JOINT    ULTRA PRECISION    SUPPORT TABLE    TAIL STOCK    SCROLL CHUCK    POWER CHUCK    CLAMP DEVICE    T-NUT

## Specifications

Item / Code No.		NST250	NST300	NST500
Diameter of Table	φmm	250	300	500
Diameter of Spindle Hole	φmm	φ60H7 φ52	φ60H7 φ60	φ75H7 φ61.5
Center Height	mm	155	208	288
Width of T Slot	mm	12 <sup>+0.018</sup> <sub>0</sub>	12 <sup>+0.018</sup> <sub>0</sub>	14 <sup>+0.018</sup> <sub>0</sub>
Clamping System		Pneumatic*2	Pneumatic*2	Pneumatic*2
Clamping Torque	N·m	147	196	196
Table Inertia at Motor Shaft	$\left(\frac{GD^2}{4}\right) \text{ kg}\cdot\text{m}^2 \times 10^{-3}$	0.39	0.59	0.69
Servo Motor	min <sup>-1</sup>	α iF2·2000	α iF4·2000	α iF8·2000
MIN. Increment		0.001°	0.001°	0.001°
Rotation Speed	min <sup>-1</sup>	16.6	11.1	5.5
Total Reduction Ratio		1/120	1/180	1/360
Indexing Accuracy	sec	20	20	20
Net Weight	kg	75	135	320
MAX. Work Load on the Table	90°  kg	50	100	200
	Horizontal  kg	100	300	500
MAX. Thrust Load applicable on the Table	N	17500	31860	75000
	*1  FXL N·m	603	903	2884
	FXL N·m	770	2010	8330
MAX. Work Inertia	90° $\left(\frac{GD^2}{4}\right) \text{ kg}\cdot\text{m}^2$	1.35	3.37	14.70
Driving Torque	N·m	144	288	1152

\*1 This is the strength of the worm wheel without brake. It is applied against dynamic cutting thrust.

\*2 Air Intensifying Booster system is available if the supplied air pressure is under 0.5MPa or the brake torque is required to increase.

★ iF8/3000 motor can be mounted on NST300.

# NST250, 300, 500

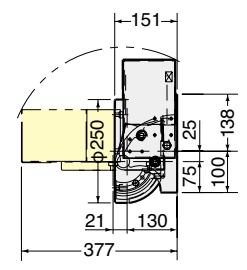
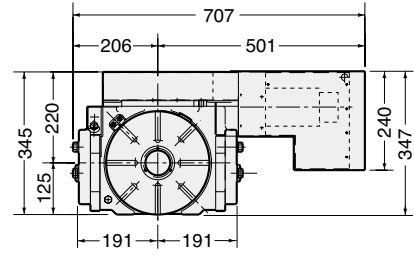


External dimensions depend on the type of the servo motor. Indicated dimensions are in case of FANUC. Please contact us for CAD files (2D:DXF, 3D:PARASOLID).

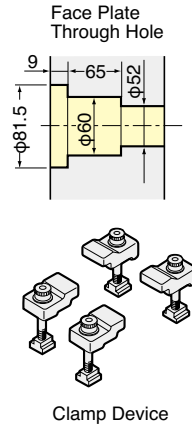
## NST250



Center socket is included in the Photo. (optional)



Center height at 90° : 155mm



Clamp Device

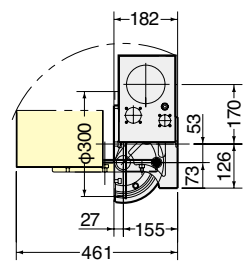
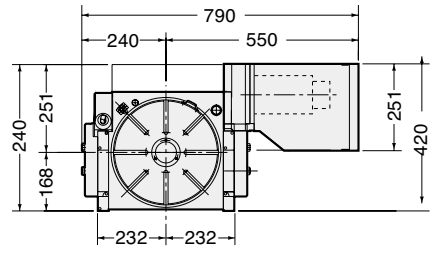


Guide key width: 18mm  
Table height in horizontal position: 151mm

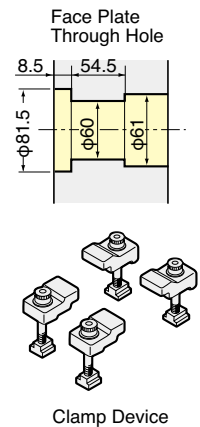
## NST300



Center socket is included in the Photo. (optional)



Center height at 90° : 208mm



Clamp Device

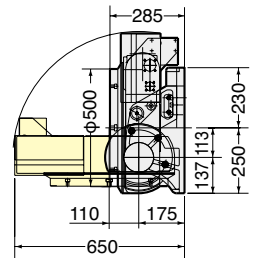
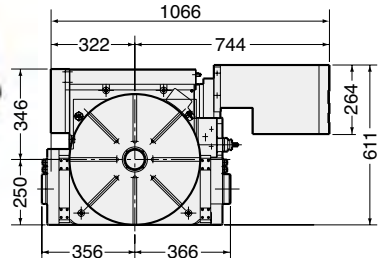


Guide key width: 18mm  
Table height in horizontal position: 182mm

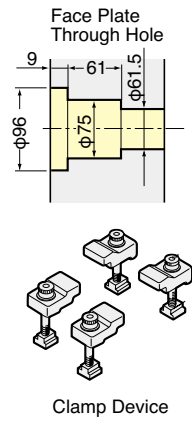
## NST500



Center socket is included in the Photo. (optional)



Center height at 90° : 288mm



Clamp Device



Guide key width: 18mm  
Table height in horizontal position: 285mm

NST