

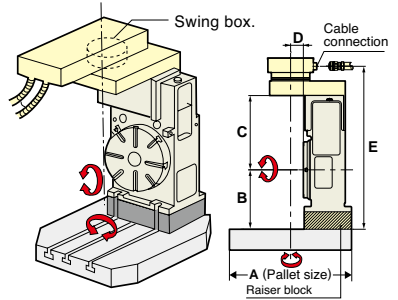
TOP SIDE MOTOR MOUNTED CNC ROTARY TABLE



CNC302T

■ Ideal for automation of small parts by mounting of jig holder

Also ideal for B-axis of general-purpose horizontal machining center. Figure at right shows example of pallet mounting. Please specify A, B, C, D and E.



— MOTOR MOUNTED —		— FACE PLATE —		— M-SIGNAL METHOD —	
T TOP SIDE	B BACK SIDE	WITH FACE PLATE	W/O FACE PLATE	α21 CTRL	EZ CTRL
ROTARY JOINT	ULTRA PRECISION	SUPPORT TABLE	TAIL STOCK	SCROLL CHUCK	POWER CHUCK
				ADD. AXIS	ACCURACY SPEC.
				CLAMP DEVICE	T-NUT

Specifications

(): High Speed CNC ROTARY Table Z series

Item / Code No.		CNC202T CNCZ202T	CNC260T CNCZ260T	CNC302T*5 CNCZ302T
Diameter of Table	φmm	200	260	300
Diameter of Spindle Hole	φmm	φ60H7 φ40	φ80H7	φ80H7
Center Height	mm	150	170	170
Width of T Slot	mm	12 ^{+0.018} ₀	12 ^{+0.018} ₀	12 ^{+0.018} ₀
Clamping System		Pneumatic*4	Pneumatic*4 / Hydraulic	Pneumatic*4 / Hydraulic
Clamping Torque	N·m	303	588 / 1568	588 / 1568
Table Inertia at Motor Shaft	$\frac{GD^2}{4}$ kg·m ² ×10 ⁻³	1.0	1.5	1.5
Servo Motor	min ⁻¹	αiF4·3000	αiF4·3000	αiF4·3000
MIN. Increment		0.001°	0.001°	0.001°
Rotation Speed	min ⁻¹	25.0(50.0)	25.0(50.0)	25.0(50.0)
Total Reduction Ratio		1/120(1/60)	1/120(1/60)	1/120(1/60)
Indexing Accuracy	sec	±20	20	20
Net Weight	kg	70	160	165
MAX. Work Load on the Table	Vertical	100 kg	175	175
	Horizontal	—	—	—
MAX. Thrust Load applicable on the Table		18000 N	42480	42480
	*1	542 FXL N·m	1442	1442
		690 FXL N·m	2320	2320
Guide Line of MAX. Unbalancing Load	*2	50 N·m	50	50
MAX. Work Inertia	Vertical	1.0(0.5) $\frac{GD^2}{4}$ kg·m ²	3.2(1.6)	3.2(1.6)
Driving Torque	*3	192(153) N·m	192(153)	192(153)

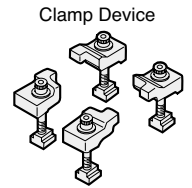
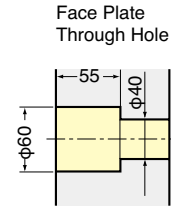
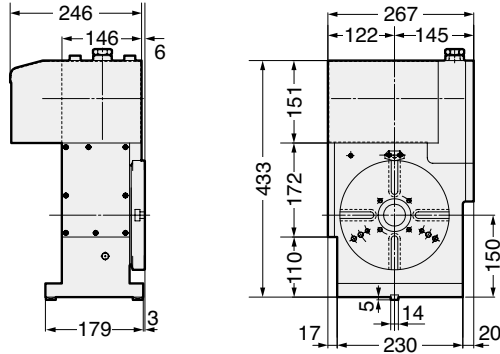
*1 This is the strength of the worm wheel without brake. It is applied against dynamic cutting thrust.
 *2 The guide line of MAX unbalancing load means the unbalancing load, when the rotary table is used with support table in vertical application. The guide line figure will be different according to the servo motor.
 *3 Driving torque means the torque at MAX. rotation speed after acceleration. Driving torque is almost constant and independent from the load except unbalancing load is applied.
 * Air Intensifying Booster system is available if the supplied air pressure is under 0.5MPa or the brake torque is required to increase. * CNC302T is semi-standard model. ★ CNCZ series table can not be recommended for the application with large unbalancing load. CNCZ series table is recommended for the application only with light load.

CNC202T, 260T, 302T



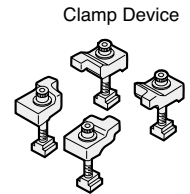
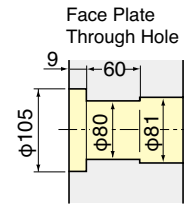
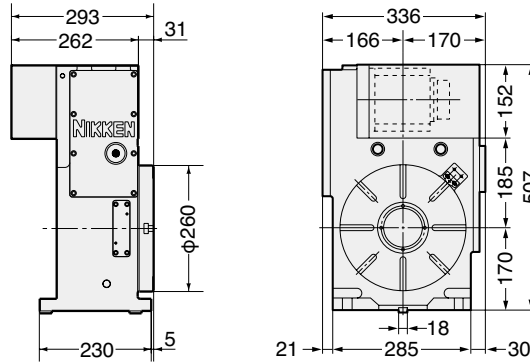
External dimensions depend on the type of the servo motor. Indicated dimensions are in case of FANUC. Please contact us for CAD files (2D:DXF, 3D:PARASOLID).

CNC202T, CNCZ202T



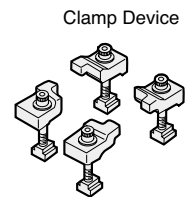
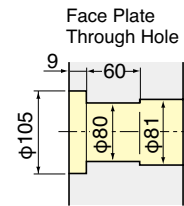
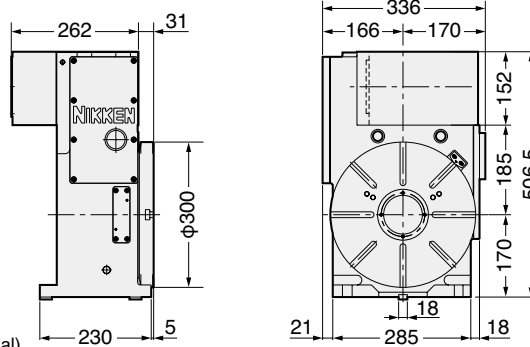
Air purge function is provided inside the motor cover as standard.

CNC260T, CNCZ260T



For the rotary table with pneumatic clamping, air purge function is provided inside the motor cover as standard.

CNC302T, CNCZ302T



Center socket is included in the Photo. (optional)



For the rotary table with pneumatic clamping, air purge function is provided inside the motor cover as standard.

Specification of the Top Side Mounted CNC Rotary Table



Photo with CNC302T without T slot.



Synchronizers movement of 2 off CNC401T
Tubular roller bearing is installed against the thrust load. Therefore, when 2 rotary tables are faced on both side to synchronise movement, the system can be run without affecting the heat expansion of the rotary table.



CNC401T is installed on the pallet of the horizontal M/C.



CNC401T is installed on CNC600.



CNC501T is used for the tilting axis table of 5AX-tilting rotary table.

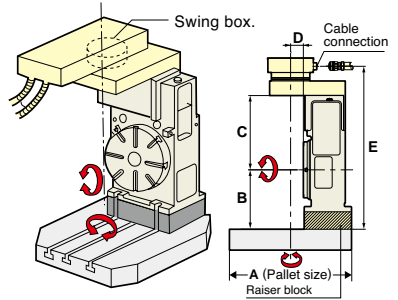
TOP SIDE MOTOR MOUNTED CNC ROTARY TABLE



CNC501T

■ Ideal for automation of small parts by mounting of jig holder

Also ideal for B-axis of general-purpose horizontal machining center. Figure at right shows example of pallet mounting. Please specify A, B, C, D and E.



— MOTOR MOUNTED —		— FACE PLATE —		— M-SIGNAL METHOD —	
T TOP SIDE	B BACK SIDE	WITH FACE PLATE	W/O FACE PLATE	α21 CTRL	EZ CTRL
ROTARY JOINT	ULTRA PRECISION	SUPPORT TABLE	TAIL STOCK	SCROLL CHUCK	POWER CHUCK
				CLAMP DEVICE	T-NUT
				ADD. AXIS	ACCURACY SPEC.

Specifications

Item / Code No.		CNC321T*4	CNC401T	CNC501T	CNC601T
Diameter of Table	φmm	320	400	500	600
Diameter of Spindle Hole	φmm	φ105H7	φ105H7	φ130H7	φ130H7
Center Height	mm	240	240	310	310
Width of T Slot	mm	12 ^{+0.018} ₀	14 ^{+0.018} ₀	14 ^{+0.018} ₀	14 ^{+0.018} ₀
Clamping System		Hydraulic	Hydraulic	Hydraulic	Hydraulic
Clamping Torque	N·m	1760	1760	4655	4655
Table Inertia at Motor Shaft	$\frac{GD^2}{4}$ kg·m ² ×10 ⁻³	2.0	2.0	9.0	8.8
Servo Motor	min ⁻¹	aiF12·2000	aiF12·2000	aiF22·2000	aiF22·2000
MIN. Increment		0.001°	0.001°	0.001°	0.001°
Rotation Speed	min ⁻¹	16.6	16.6	16.6	11.1
Total Reduction Ratio		1/120	1/120	1/120	1/180
Indexing Accuracy	sec	15	15	15	15
Net Weight	kg	220	245	495	525
MAX. Work Load on the Table	Vertical	250 kg	250	400	400
	Horizontal	—	—	—	—
MAX. Thrust Load applicable on the Table		53100 N	53100	150000	150000
	*1	FXL N·m 2648	2648	5709	5709
		FXL N·m 3840	3840	16650	16650
Guide Line of MAX. Unbalancing Load	*2	100 N·m	100	200	200
MAX. Work Inertia	Vertical	8.0 $\frac{GD^2}{4}$ kg·m ²	8.0	19	37
Driving Torque	*3	576 N·m	576	576	864

*1 This is the strength of the worm wheel without brake. It is applied against dynamic cutting thrust.
 *2 The guide line of MAX unbalancing load means the unbalancing load when the rotary table is used with support table in vertical application. The guide line figure will be different according to the servo motor
 *3 Driving torque means the torque at MAX. rotation speed after acceleration. Driving torque is almost constant and independent from the load except unbalancing load is applied.
 *4 CNC321T is semi-standard model.
 ★ αiF22/4000 motor can be mounted on CNC321T, 401T, 501T, 601T. ★ Total reduction ratio of 1/180 is also available for CNC501T.

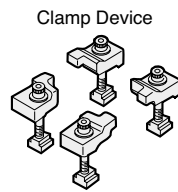
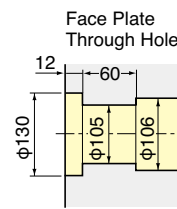
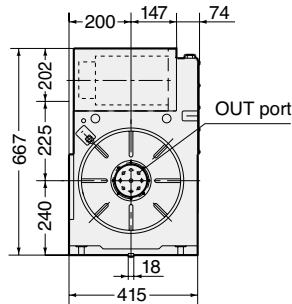
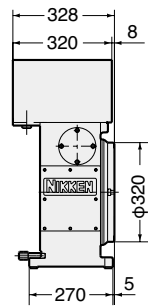
CNC321T, 401T, 501T, 601T

NIKKEN

CNC

External dimensions depend on the type of the servo motor. Indicated dimensions are in case of FANUC. Please contact us for CAD files (2D:DXF, 3D:PARASOLID).

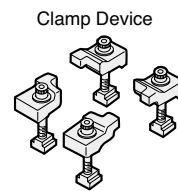
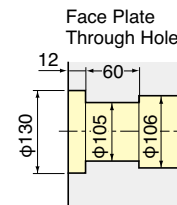
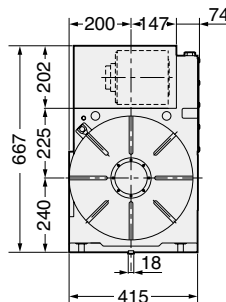
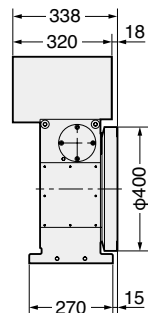
CNC321T



Rotary joint is included in the layout. In ports are located in back side.

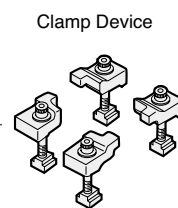
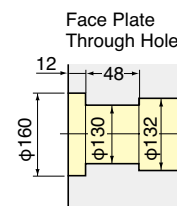
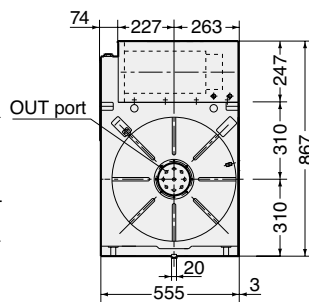
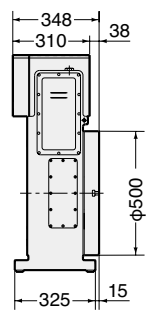
CNC401T

★ Built-in type rotary joint can be mounted on **CNC401** refer



Center socket is included in the Photo. (optional) IN ports are located in back side.

CNC501T



Rotary joint is included in the layout. (optional) In ports are located in back side.

CNC601T

