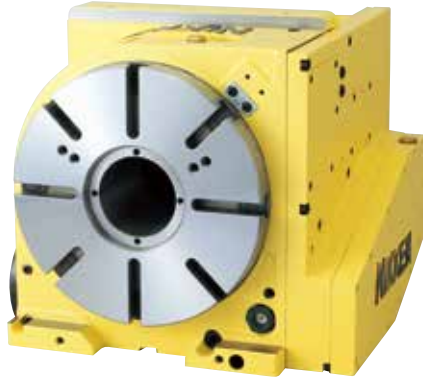


# BACK SIDE MOTOR MOUNTED CNC ROTARY TABLE **NIKKEN**



CNC260B

- Suitable for the machine which does not have so wide space for Y axis, such as the gantry type M/C or the M/C with splash guard
- Also compatible with rotary joints
- Select among pneumatic, hydraulic, and air-hydro clamping systems

— MOTOR MOUNTED — — FACE PLATE — — M-SIGNAL METHOD —

T TOP SIDE
B BACK SIDE
WITH FACE PLATE
W/O FACE PLATE
α21 CTRL
EZ CTRL
ADD. AXIS
ACCURACY SPEC.

ROTARY JOINT
ULTRA PRECISION
SUPPORT TABLE
TAIL STOCK
SCROLL CHUCK
POWER CHUCK
CLAMP DEVICE
T-NUT

## Specifications

( ): High Speed CNC ROTARY Table Z series

Item / Code No.		CNC180B CNCZ180B	CNC202B CNCZ202B	CNC260B CNCZ260B	CNC302B*5 CNCZ302B	CNC321B*5 CNCZ321B	CNC401B CNCZ401B
Diameter of Table	φmm	180	200	260	300	320	400
Diameter of Spindle Hole	φmm	φ60H7 φ40	φ60H7 φ40	φ80H7	φ80H7	φ105H7	φ105H7
Center Height	mm	180	180	170	170	230	230
Width of T Slot	mm	12 <sup>+0.018</sup> <sub>0</sub>	12 <sup>+0.018</sup> <sub>0</sub>	12 <sup>+0.018</sup> <sub>0</sub>	12 <sup>+0.018</sup> <sub>0</sub>	12 <sup>+0.018</sup> <sub>0</sub>	14 <sup>+0.018</sup> <sub>0</sub>
Clamping System		Pneumatic*4	Pneumatic*4	Pneumatic*4 / Hydraulic	Pneumatic*4 / Hydraulic	Hydraulic	Hydraulic
Clamping Torque	N·m	303	303	588 / 1568	588 / 1568	1760	1760
Table Inertia at Motor Shaft $(\frac{GD^2}{4})$	kg·m <sup>2</sup> ×10 <sup>-3</sup>	0.4	0.4	1.7	1.8	7.0	7.0
Servo Motor	min <sup>-1</sup>	αiF2·3000	αiF4·3000	αiF4·3000	αiF4·3000	αiF12·2000	αiF12·2000
MIN. Increment		0.001°	0.001°	0.001°	0.001°	0.001°	0.001°
Rotation Speed	min <sup>-1</sup>	33.3(66.6)	33.3(66.6)	25.0(50.0)	25.0(50.0)	22.2(44.4)	22.2(44.4)
Total Reduction Ratio		1/90(1/45)	1/90(1/45)	1/120(1/60)	1/120(1/60)	1/90(1/45)	1/90(1/45)
Indexing Accuracy	sec	±20	±20	20	20	15	15
Net Weight	kg	56	60	145	150	240	270
MAX. Work Load on the Table	Vertical	100	100	175	175	250	250
	Horizontal	—	—	—	—	—	—
MAX. Thrust Load applicable on the Table		18000	18000	42480	42480	53100	53100
	*1	542	542	1442	1442	2648	2648
		690	690	2320	2320	3840	3840
Guide Line of MAX. Unbalancing Load	*2	30	50	50	50	100	100
MAX. Work Inertia	Vertical	0.4	1.0	3.2(1.6)	3.2(1.6)	6.4(3.2)	6.4(3.2)
Driving Torque	*3	72(54)	144(115)	192(153)	192(153)	432(345)	432(345)

\*1 This is the strength of the worm wheel without brake. It is applied against dynamic cutting thrust.

\*2 The guide line of MAX unbalancing load means the unbalancing load, when the rotary table is used with support table.

The guide line figure will be different according to the servo motor

\*3 Driving torque means the torque at MAX. rotation speed after acceleration. Driving torque is almost constant and independent from the load except unbalancing load is applied.

\*4 Air Intensifying Booster system is available if the supplied air pressure is under 0.5MPa or the brake torque is required to increase.

\*5 NC302B, CNC321B is semi-standard model. ★ φF4/5000 motor can be mounted on CNC180B. ★ φF8/4000 motor can be mounted on CNC260B, 302B.

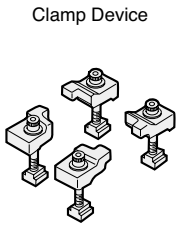
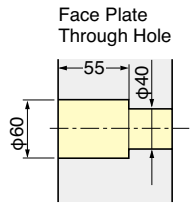
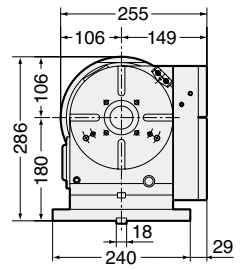
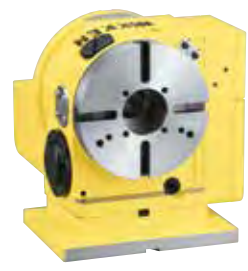
★The air-hydraulic Booster is available, when the rotary table with hydraulic clamping system is used on the M/C without hydraulic source, please refer

# CNC180B, 202B, 260B, 302B, 321B, 401B



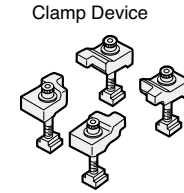
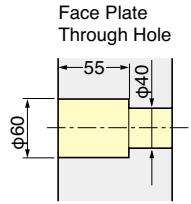
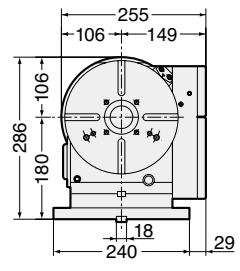
External dimensions depend on the type of the servo motor. Indicated dimensions are in case of FANUC. Please contact us for CAD files (2D:DXF, 3D:PARASOLID).

## CNC180B, CNCZ180B



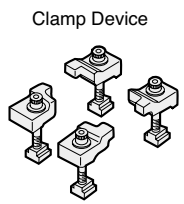
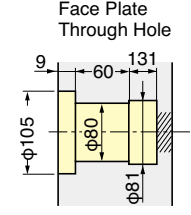
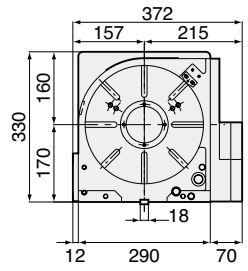
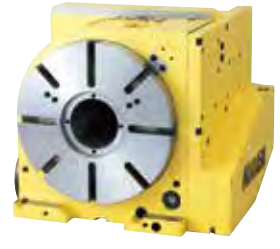
Air purge function is provided.

## CNC202B, CNCZ202B



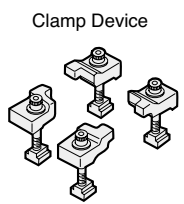
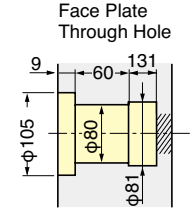
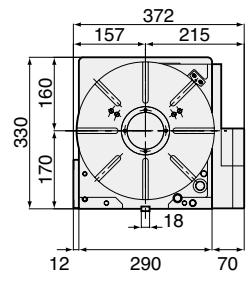
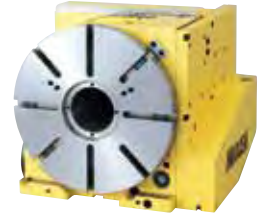
Air purge function is provided.

## CNC260B, CNCZ260B



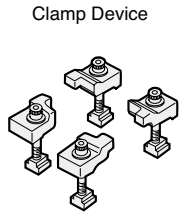
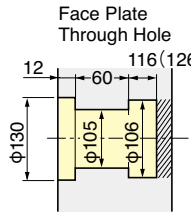
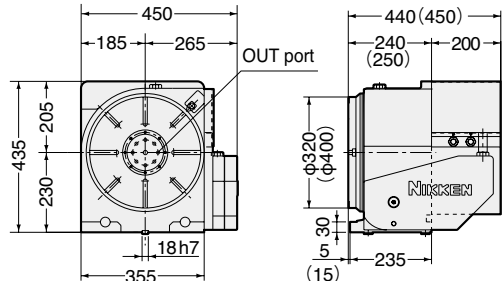
For the rotary table with pneumatic brake, air purge function is provided inside the motor cover as standard.

## CNC302B, CNCZ302B



For the rotary table with pneumatic brake, air purge function is provided inside the motor cover as standard.

## CNC321B, CNCZ321B, CNC401B, CNCZ401B



IN ports are located in left side.  
( ) : CNC401B

Center socket is included in the Photo & layout. (optional) ★ Built-in type rotary joint can be mounted on CNC321B & 401B