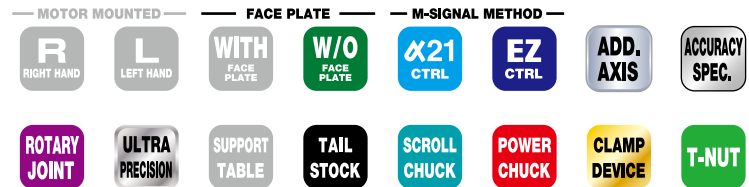


# MULTI-SPINDLE TILTING ROTARY TABLE

**NIKKEN**


5AX-4MT-120

- Tilting rotary table with Multi-Spindle
- Various attachment for fixing work piece
- Ideal for small items and mass-produced parts



## Specifications Multi-Spindle Tilting Rotary Tables are all semi-standard models. Please contact us. ( ):High Speed type Please contact us.

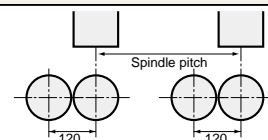
Item / Code No.		5AX-2MT-105		5AX-4MT-105	
Diameter of Table	mm	105		105	
Diameter of Spindle Hole	mm	60H7 30		60H7 30	
Number of spindles (Pitch)	mm	120		120	
Center Height (90°)	mm	175		235	
Table Height in Horizontal Position (0°)	mm	250		300	
Width of T Slot	mm	16 <sup>+0.018</sup> <sub>0</sub>		16 <sup>+0.018</sup> <sub>0</sub>	
Axis		Rotary	Tilting (0°~105°)	Rotary	Tilting (0°~105°)
Clamping System		Pneumatic*1	Pneumatic*1	Hydraulic	Hydraulic
Clamping Torque	N·m	147	147	147	343
Table Inertia at Motor Shaft $(\frac{GD^2}{4})$	kg·m <sup>2</sup> ×10 <sup>-3</sup>	0.13	0.13	0.2	0.48
Servo Motor	min <sup>-1</sup>	α iF2·3000	α iF2·3000	α iF8·3000	α iF4·3000
MIN. Increment		0.001°	0.001°	0.001°	0.001°
Rotation Speed	min <sup>-1</sup>	33.3	16.6	16.6(44.4)	25.0
Total Reduction Ratio		1/90	1/180	1/180(1/45)	1/120
Indexing Accuracy	sec	±30	60	±45	±30
Net Weight	kg	150		350	
MAX. Work Load on the Table	0° to 30°	15 kg		25 kg	
	30° to 90°	10 kg		15 kg	
MAX. Thrust Load applicable on the Table	Tilting Angle = 0°	3920 N		3920 N	
	Tilting Angle = 0°	L=60mm F <sub>1</sub> =784N		L=60mm F=2858N	
	Tilting Angle = 90°	L <sub>1</sub> =0mm F <sub>1</sub> =653N L <sub>2</sub> =100mm F <sub>2</sub> =490N		L <sub>1</sub> =0mm F <sub>1</sub> =1380N L <sub>2</sub> =100mm F <sub>2</sub> =1040N	
	Tilting Angle = 90°	49 F×L N·m		49	
MAX. Work Inertia		0.014 $(\frac{GD^2}{4})$ kg·m <sup>2</sup>		0.021	
Driving Torque		36 N·m		144	

\*1 Air Intensifying Booster system is available if the supplied air pressure is under 0.5MPa or the brake torque is required to increase. **P.95**

★ Min. pitch between spindles 105:120mm. If you need different pitch, please contact us.

★ 4 spindle rotary table to suit 2 Spindle M/C is also available, please contact with us.

★ Max numbers of spindles 105:4 spindles.

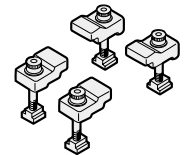
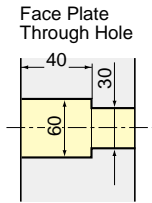
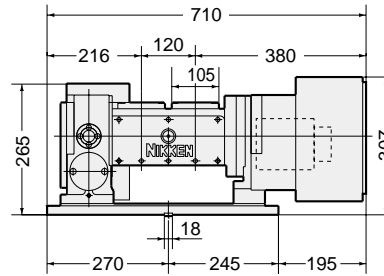
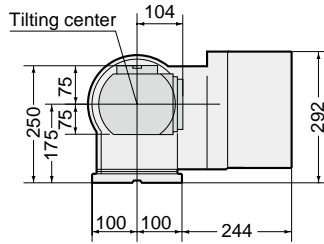


# 5AX-2MT, 5AX-4MT



External dimensions depend on the type of the servo motor. Indicated dimensions are in case of FANUC. Please contact us for CAD files (2D:DXF, 3D:PARASOLID).

## 5AX-2MT-105



Clamp Device

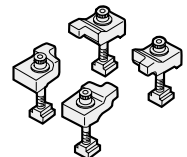
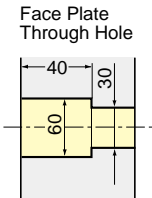
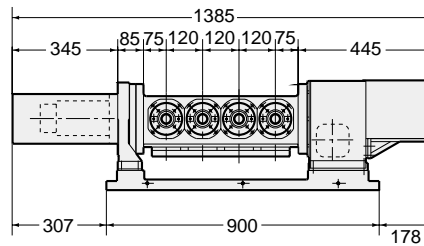
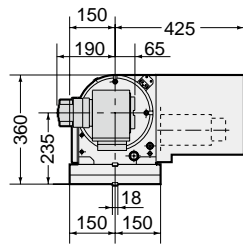


Center height of high column table is 35mm higher than that of standard table.  
MAX. number of ports in rotary joint Standard: 4 ports, High Column: 6 ports

## 5AX-4MT-105



Photo with 4" Power chuck. (optional)



Clamp Device



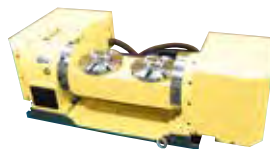
MAX. 6 port rotary joint can be installed on standard type as an option.

### Multi-Spindle Tilting Rotary Table

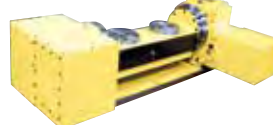
For Multi-Spindle Tilting Rotary Table, please contact us to know the required faceplate diameters, fixture attachment (e.g. Power Chuck etc), the required spindle pitch, the M/C model and the type of NC.



5AX-2MT-170-200



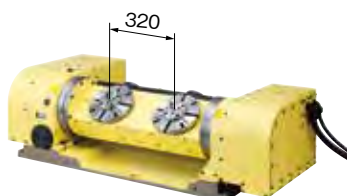
5AX-2MT-201-250FA



5AX-2MT-200-360



5AX-2MT-200-250



5AX-2MT-201-320



5AX-2MT-180-200FA



5AX-2MT-130-170



5AX-2MT-200-250