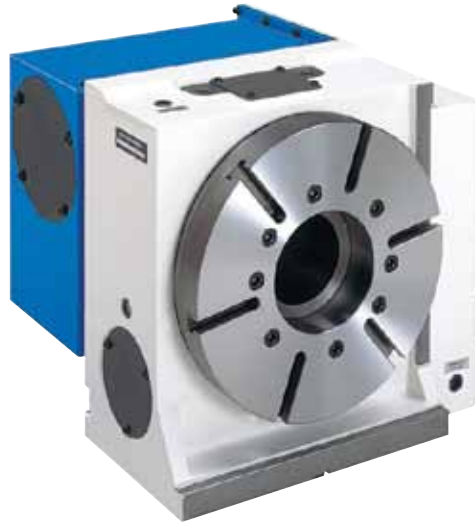


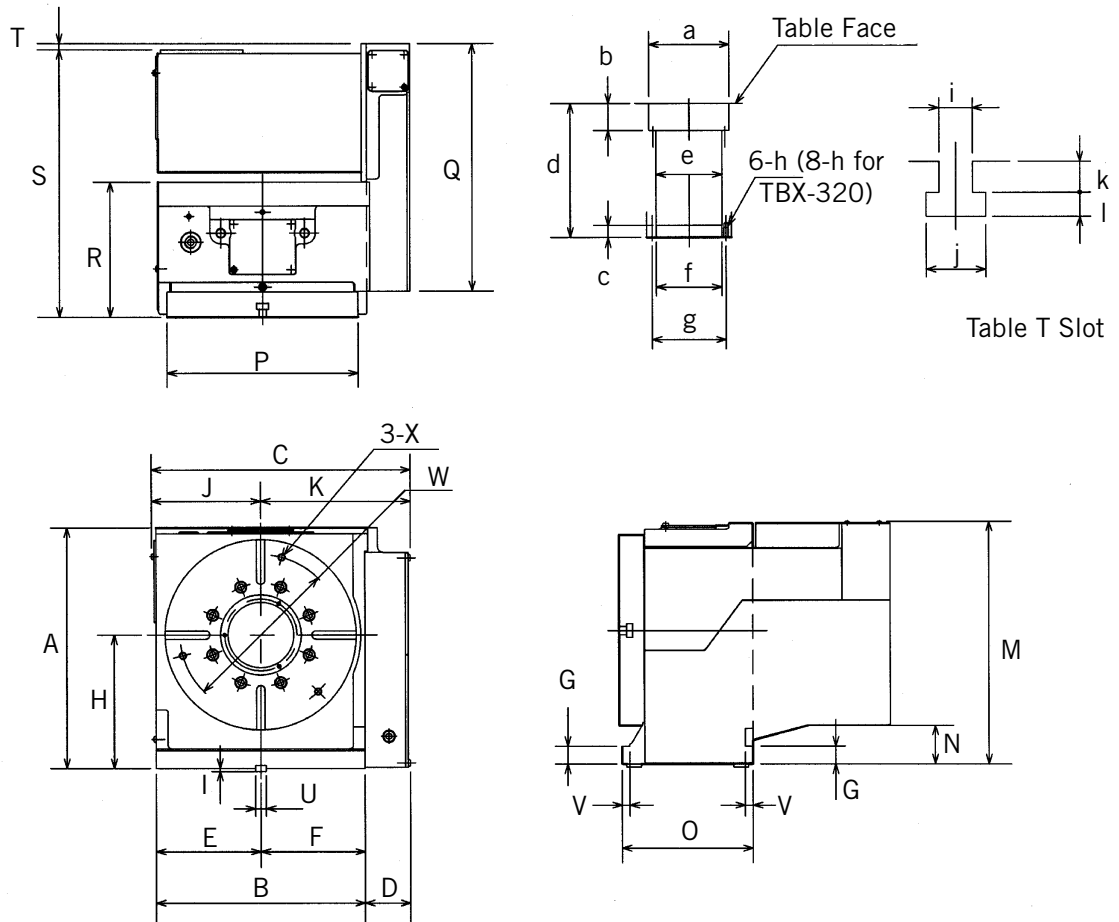
## TBX SERIES



MODEL	TBX160	TBX200	TBX250	TBX320	
Table Diameter	6.50	7.87	9.84	12.60	
Center Height in Vertical	4.72	5.51	7.09	8.86	
Overall Height in Vertical	10.63	11.65	14.45	16.06	
Thru Hole Diameter	1.57	2.05	3.07	4.33	
Width of T Slot	.47	.47	.47	.55	
AC Servo Motor	— Fanuc — Mitsubishi — Yaskawa — OSP	αiF2/5000 HF-75T SGMAS-08 BL-ME24J	αiF4/4000 HF-104T SGMGH-05 BL-ME40J	αiF4/4000 HF-104T SGMGH-09 BL-ME80J	αiF8/3000 HF-104T SGMGH-09 BL-ME80J
Gear Ratio	1/72	1/90	1/90	1/120	
* Maximum RPM	41.6	33.3	33.3	25	
Minimum Resolution (Degree)	0.001	0.001	0.001	0.001	
Indexing Accuracy (Second)	20	20	15	15	
Repeatability (Second)	±2	±2	±2	±2	
Clamping Force (ft-lb.) — Air Pressure at 71 PSI	332	443	811	1918	
Permissible Load (lb.) — Vertical	176	221	276	397	
Maximum Work Inertia (lb.-in-sec <sup>2</sup> )	2.3	4.4	8.7	19.8	
Weight (lb.)	146	164	298	485	

Note: \* means maximum RPM is obtained with motor speed at 3,000 RPM.

# TBX SERIES



MODEL	A	B	C	D	E	F	G	H	I	J	K
TBX160	10.63	8.11	11.22	2.80	4.10	4.02	.79	4.72	.20	4.41	6.81
TBX200	10.24	9.33	13.31	2.80	4.53	4.80	.79	5.51		5.71	7.60
TBX250	13.07	11.65	15.94	2.99	5.51	6.14	.98	7.09		6.81	9.13
TBX320	15.94	13.78	17.09	2.99	6.89	6.89	1.18	8.86		7.20	9.88

MODEL	M	N	O	P	Q	R	S	T	U	V	W	X
TBX160	10.63	1.34	5.51	6.50	11.73	5.71	11.34	.59	.7087 h7	.39	5.71	M10
TBX200	11.85	1.38	6.73	7.87	12.36	6.93	14.09	—		.39	6.69	M10
TBX250	14.76	2.17	8.07	9.84	14.84	8.27	15.94	.31		.51	8.19	M12
TBX320	16.06	2.56	8.66	12.60	16.26	8.86	17.64	.31		.51	—	—

MODEL	a	b	c	d	e	f	g	h	i	j	k	l
TBX160	1.9685 H7	1.26	.79	5.67	1.57	1.5748 H8	1.97	M6	.47	.83	.43	.35
TBX200	2.9528 H7	1.46		6.89	2.09	2.0472 H8	2.44	M6				
TBX250	4.1339 H7	1.54		8.23	3.09	3.0709 H8	3.58	M8				
TBX320	5.3150 H7	1.77		8.82	4.35	4.3307 H8	4.88	8-M8				